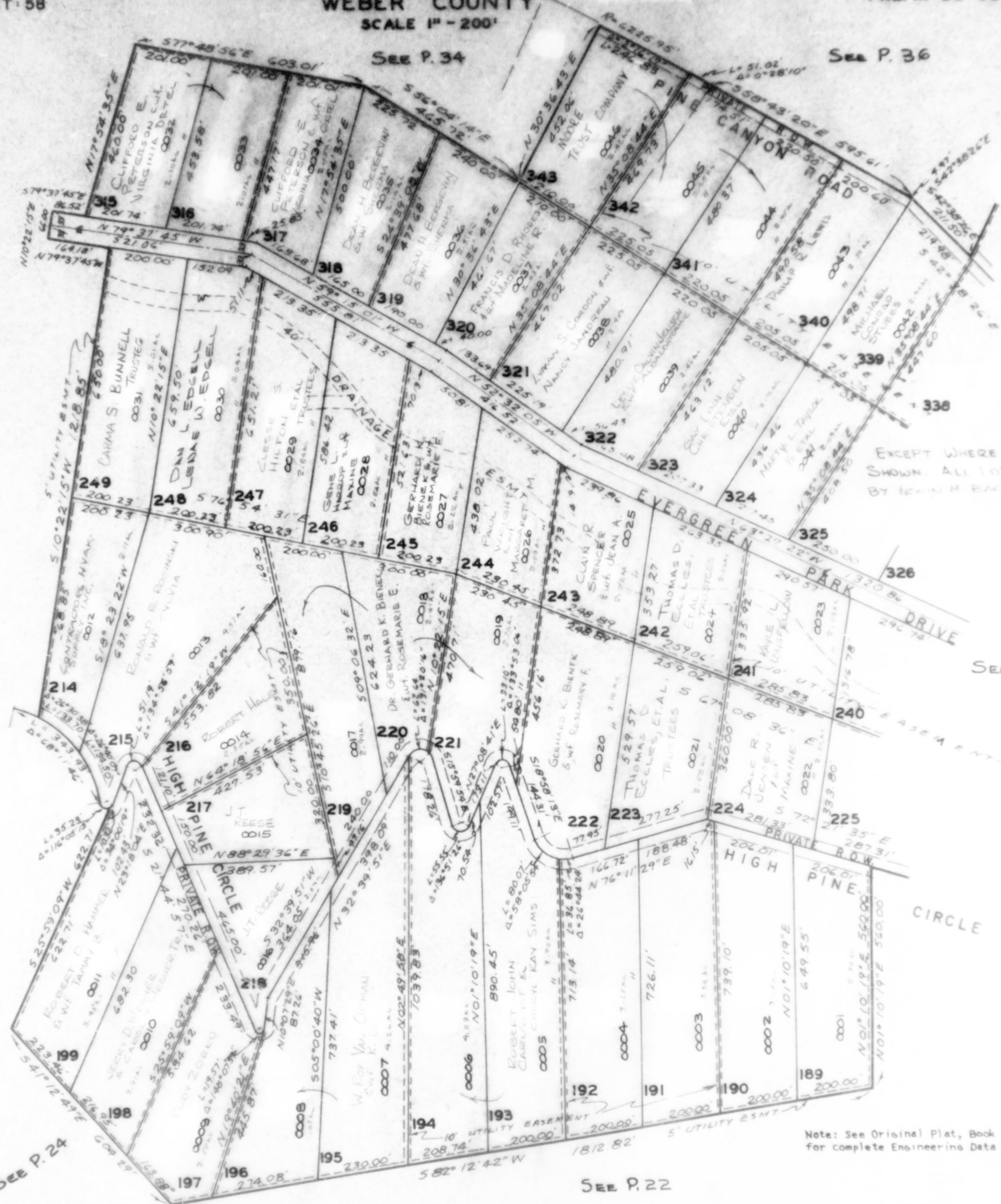


PART OF SEC. 32-33, T.7N., R.3E., S.L.B.&M. EVERGREEN PARK SUBDIVISION NO. I

LOTS 189 - 199, 214 - 224, 241 - 249, 315 - 324, 339 - 343
WEBER COUNTY PREFIX: 23-029
TAXING UNIT: 58

SCALE 1" = 200'



EXCEPT WHERE OTHERWISE SHOWN, ALL LOTS ARE OWNED BY LEWIN M. BARR

Note: See Original Plat, Book 13, Page 53 for complete Engineering Data and Lot Acresages.